



LANDKREIS LÜNEBURG

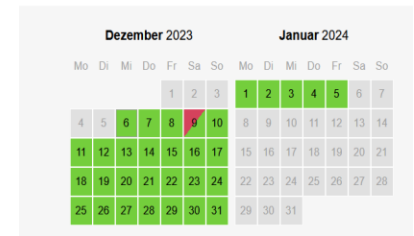
# BIKE-SHARING CARGO BIKE

INSTRUCTIONS  
URBAN ARROW FAMILY



## BOOK THE CARGO BIKE

- Create an account on the website [www.lastenrad-lueneburg.de](http://www.lastenrad-lueneburg.de), register and book an appointment or pick up the cargo bike during opening hours without booking
- Cargo bike can be picked up free of charge, current PIN for key safe will be sent by e-mail after booking (key for frame lock, folding lock and battery)



Example for booking

<b>Kindergarten/Nursery school Südergellersen (cargo bike and safe)</b>	<b>Community office Südergellersen (more information)</b>
Kirchgellerser Str. 12, 21394 Südergellersen	Im Alten Dorfe 5, 21394 Südergellersen
Monday-Friday 7:00 - 16:00 o'clock	Monday 08:00 - 10:00 o'clock Monday 16:00 - 18:00 o'clock

## RETURN

- **Return the key and battery and charge after use (safe)**
- **Securely lock bike with frame lock (chain and lock) and with folding lock**



## USAGE OPTIONS

- Transport box without cover: transporting children or loads
- Transport box half (picture 3) or covered (picture 4)
- Maximum load weight 125kg
- **Bicycle with frame lock (always close chain and lock under saddle during breaks)**



Picture 1



Picture 2



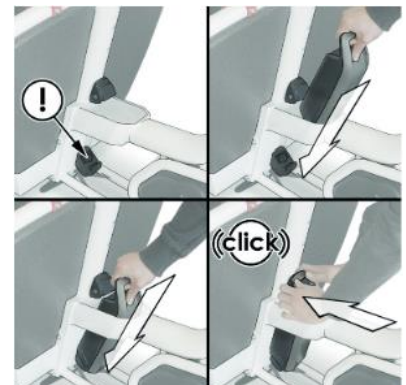
Picture 3



Picture 4

## USE BATTERY AND DISPLAY



- **Battery insertion:** 1) battery switched off, (2) key in battery lock, (3) turn key counterclockwise, (4) place battery with contacts on lower bracket on e-bike, (5) tilt battery until it clicks into place, (6) remove key




- **Battery removal:** (1) turn off battery, (2) insert key into battery lock, (3) turn key counterclockwise, (4) tilt battery out of top part of battery



## DISPLAY/TURNING ON AND OFF THE MOTOR

- Press ON/ OFF  left side, motor starts
- Lights switch  right side, **Lights on is recommended!!**

## SHIFTING GEARS AND ASSISTANCE LEVEL

- Shifting gears: turn the grip shifter on the right
- Assistance level: change with: +/-
- Display change with: < / >
- Push-assistance: press  left button from above and +



## BIKE STAND

- Driving: Lift up the bike stand completely
- Parking: place the stand on the ground, place your foot on the stand and pull the bike towards you



Lifting up the stand to this height

## FURTHER EQUIPMENT

- Key for frame lock, folding lock and battery
- Chain to lock
- Saddle adjustable with quick releases
- Transportation box with cover
- Kids transportation: belts with child safety locks/ magnetic lock



Transportation box with belts